



# Cold Brew Coffee Concentrate

## Mixing Instructions

### Traditional Cold Brew



#### Full Batch

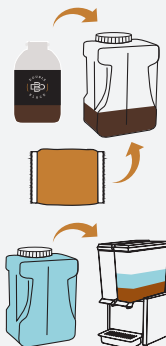
1. Add one bottle (32 fl oz) of cold brew concentrate.
2. Using a 1 gal pitcher, add 1.5 gal (192 fl oz) of filtered/bottled water into the cold brew concentrate.



#### Half Batch

1. Add ½ bottle (16 fl oz) of cold brew concentrate.
2. Using a 1 gal pitcher, add 0.75 gal (96 fl oz) of filtered/bottled water into the cold brew concentrate.
3. Store remaining cold brew concentrate in the refrigerator after opening. Opened bottles have a 5 day shelf life.

### Creamy Cold Brew



1. Pour one bottle (32 fl oz) of cold brew concentrate into container.
2. Add one pouch of creamy cold brew mix and shake the pitcher to mix the ingredients.
3. Pour the contents into the dispenser.
4. Using a 1 gal pitcher, add 1 gal (128 fl oz) of filtered/bottled water into the cold brew concentrate.

Once mixed with water, cold brew and creamy cold brew have a 5 day shelf life and must be refrigerated.